

LIPONEX-PPC

Essential Phospholipid Substance 250mg



✓ Korea's only pharmaceutical grade PPC injection

✓ IV for fatty liver and liver cirrhosis

✓ SC for targeted fat burning

PRODUCT INFORMATION



ETHICS

LIPONEX-PPC



Essential Phospholipid Substance 250mg

Approved by MFDS Korea
(Ministry of Food and Drug Safety)

5mL X 10 VIALS

Approved by MFDS Korea
(Ministry of Food and Drug Safety)

5mL X 10 VIALS

MEDICAL GRADE PPC INJECTION

APPROVED BY MFDS (KFDA)



[Contents] 5mL X 10 vials

[Directions] Administer via IV or SC

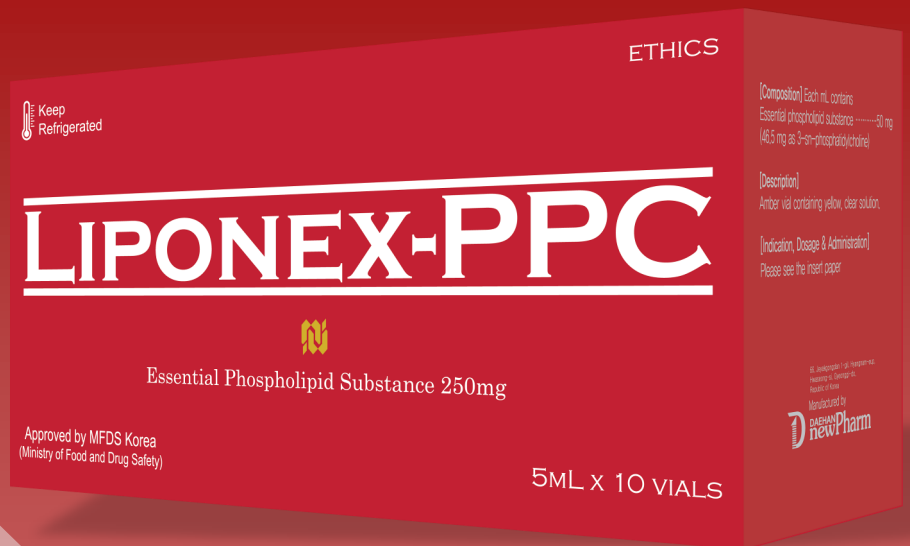
[Caution] In case that injection is administered too fast, blood pressure may decrease

[Storage] Store between 2 ~ 8 C (Refrigerator) in hermetic container, protect from sunlight

COMPOSITION

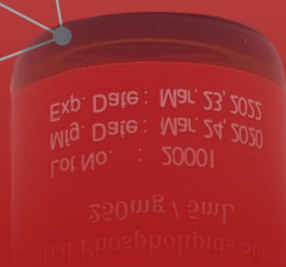
Essential Phospholipid substance

250mg



Excipients

- Sodium Deoxycholate
- Sodium Chloride
- Riboflavin
- Tocopherol Acetate
- Ethanol
- Sodium Hydroxide



MEDICAL GRADE VS COSMETIC GRADE PPC

Medical Grade PPC

1. **Strictly regulated by local FDA**
2. **Purest 3-sn-phosphatidylcholine**
Ingredient from Germany
3. **Pharmaceutical** product tested, approved and registered **even for IV use**
4. Exact doses and usage statements— **approved by the government**

Cosmetic Grade PPC

1. **Unregulated as injectable products**
Registered as creams or serums
2. **Unchecked PPC** ingredients from **unknown sources**
3. Cosmetic product for **topical solution—illegally marked** as injections
4. **Unverified** dosage and usage—only **claimed by manufacturers**



LIPONEX-PPC

DOSAGE AND ADMINISTRATION

1.

SC (PLD Therapy)

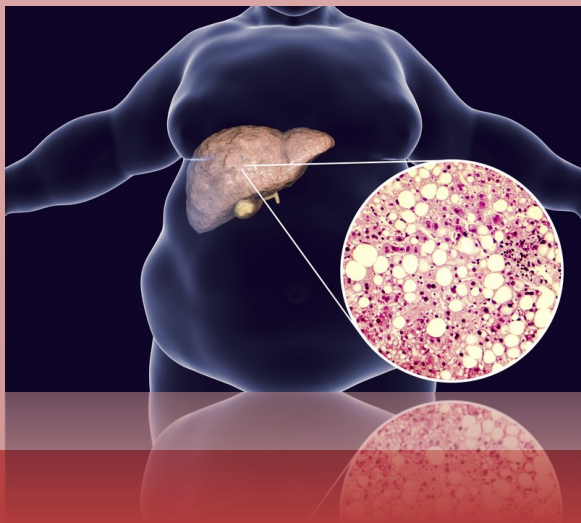
: Fat loss while reducing side effects

Refer to Page

'How To Administer PLD Therapy'



2.



IV Injection

: Fatty liver, Liver Cirrhosis

- 1) 4 vials (20mL) at a time
- 2) Twice daily
- 3) Slow intravenous injection



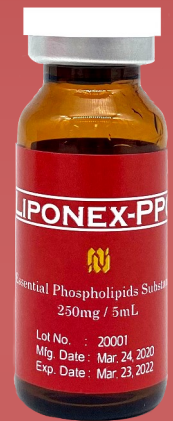
LIPONEX-PPC

PLD THERAPY

PPC mixture + LLD mixture

What is PLD?

Phosphatidyl-assisted Lymphatic Drainage. PLD therapy helps with fat melting procedures while reducing side effects, such as bruising, post therapy pain, allergic reactions and edema.



LLD

PPC

PLD
Therapy

MIX A (LLD)

Hyaluronidase 1,500 I.U 4 Vials
N/S 4cc
2% Lidocaine 1cc
Pheniramine 1cc
= 1 SET (6CC)



MIX B (PPC)

Liponex-PPC 1 vial (5cc)
D/W 1cc
2% Lidocaine 1cc
Aminophylline 2cc
Pheniramine 1cc
= 1 SET (10CC)

PLD THERAPY - PROCEDURE

How To Administer PLD Therapy

Abdomen

STEP 1: Administer Mix A (LLD)

1. Disinfect the injection site
2. Apply Nexcain Lidocaine 10.56% cream 30 minutes prior to the procedure
3. Inject total of 6 points (1cc each, 3 points on each side of abdomen)
4. Inject subcutaneously perpendicular or at 45 degrees.
5. Shake the abdominal fat from the injection sites for 30 seconds to spread out the solution

STEP 2: Administer Mix B (PPC)

1. After Mix A procedure, inject or use Lipogun to inject Mix B (0.5cc each point, 1 cm apart)
2. 2 sets (female) / 3 sets (male), once a week for 2~4 weeks is recommended.
3. Patient may feel burning due to direct injection to fat.
4. Patient may experience swelling and bruising on the injection site 3 ~ 4 days post procedure.
5. Repeat the procedure after a week when the symptoms have subsided.

Thigh

1. **Mix A (half mixture - 3cc in total):** Hyaluronidase 2vials + N/S 2cc + 2% Lidocaine 0.5cc + Pheniramine 0.5cc = **1Set (3cc)**
2. Inject 1.5cc of **Mix A** per thigh (follow STEP 1 above)
3. **Mix B (full mixture - 10cc in total):** After Mix A procedure, inject 1 set (10cc) of **Mix B** per thigh starting from the thickest part of the inner leg.

Arm

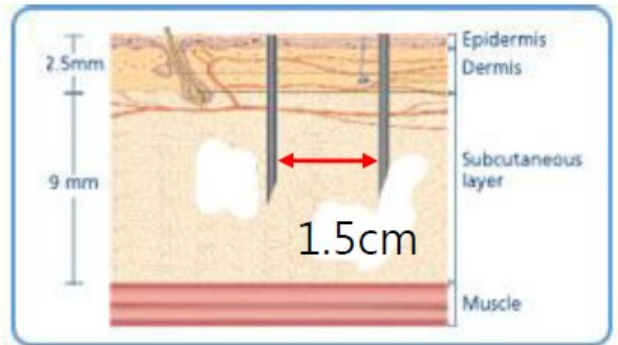
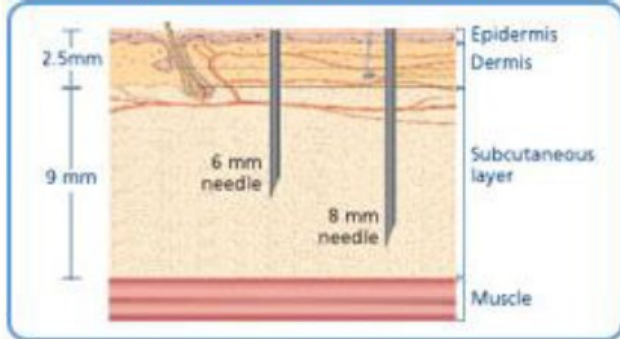
1. **Mix A (half mixture - 3cc in total):** Hyaluronidase 2Vial + N/S 2cc + 2% Lidocaine 0.5cc + Pheniramine 0.5cc = **1Set (3cc)**
2. Inject 1.5cc of **Mix A** per arm
3. **Mix B (half mixture - 5cc in total):** After Mix A procedure, inject 2.5cc of **Mix B** per arm, starting from the thickest part of the inner arm.



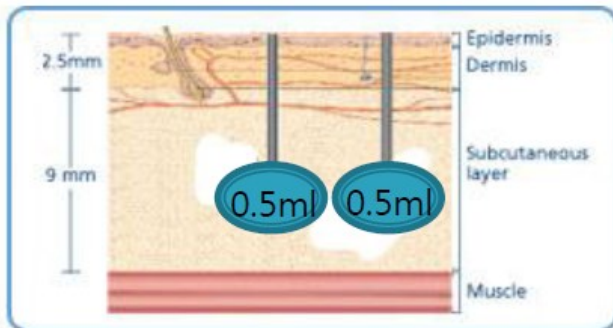
LIPONEX-PPC

INJECTION SITE

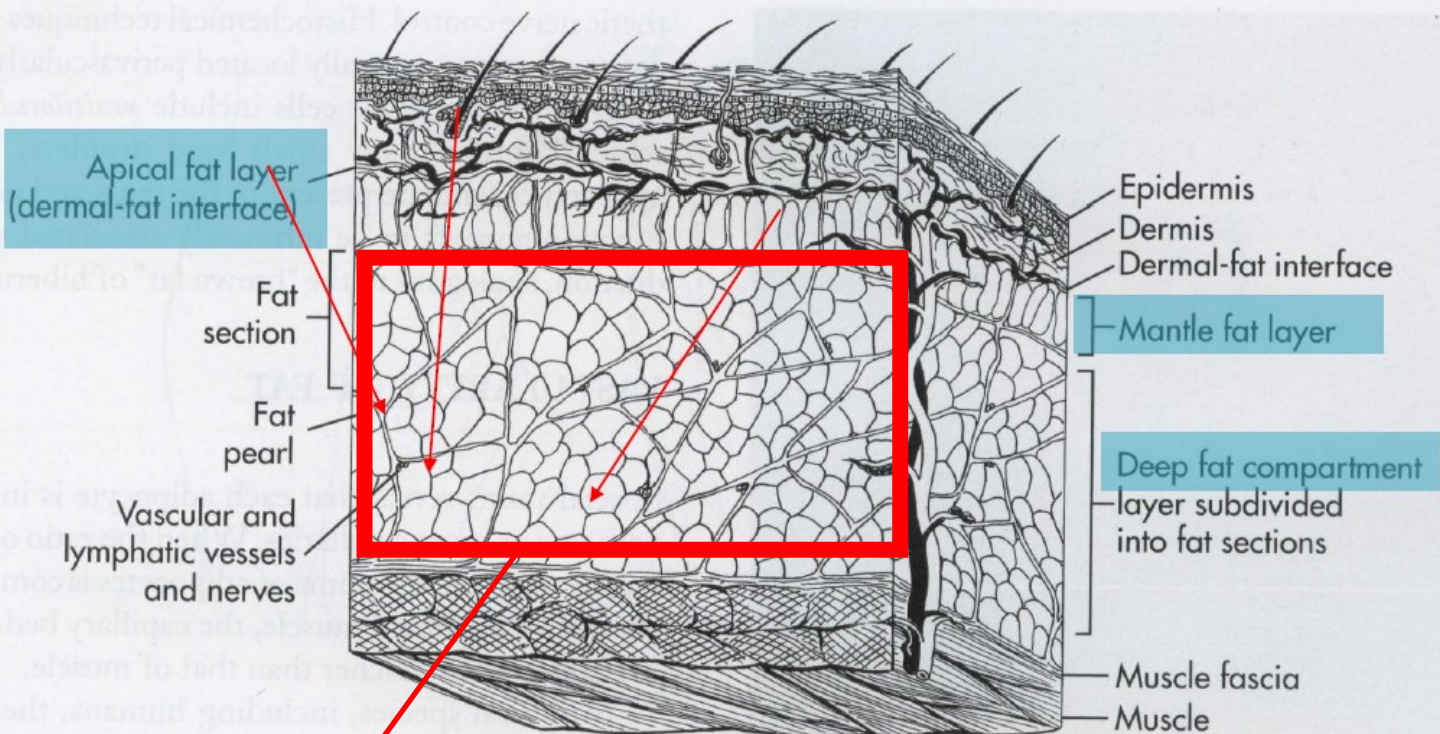
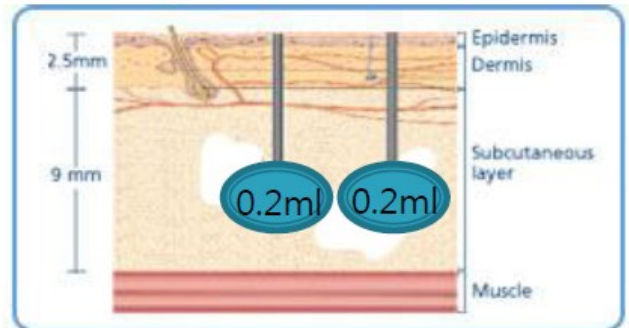
► Depth : max 12mm



► Dosage for body : 0.5ml



► Dosage for face : 0.2ml



Injection Target Layer

LIPONEX-PPC



CH Building, 71 Gonghangdaero 45gil,

Gangseogu, Seoul, Korea

(T) +82 2 6406 2405

info@nexus-pharma.com